

9 PENANG ROAD

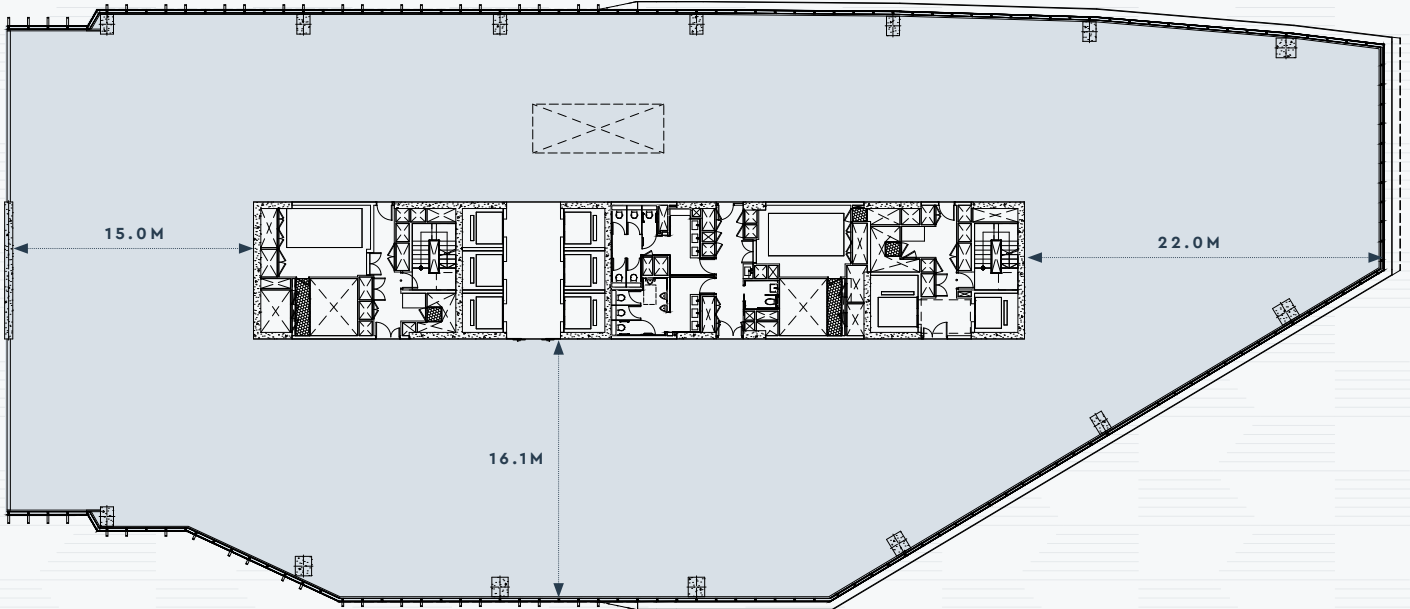
Typical Floor Plate

TOWER 1

PENANG ROAD

TOWER 2

TOWER 1



Approximate
Net Lettable Area

23,899 sqft

Tenant 1

2,220 sqm

Proposed Test Fit

1-TENANT

| | |
|-----------------|-------------|
| Office | 11 |
| Work Stations | 225 |
| Meeting Rooms | 10 |
| Total Headcount | 238 |
| Density | 9.3 sqm/pax |

PENANG ROAD

